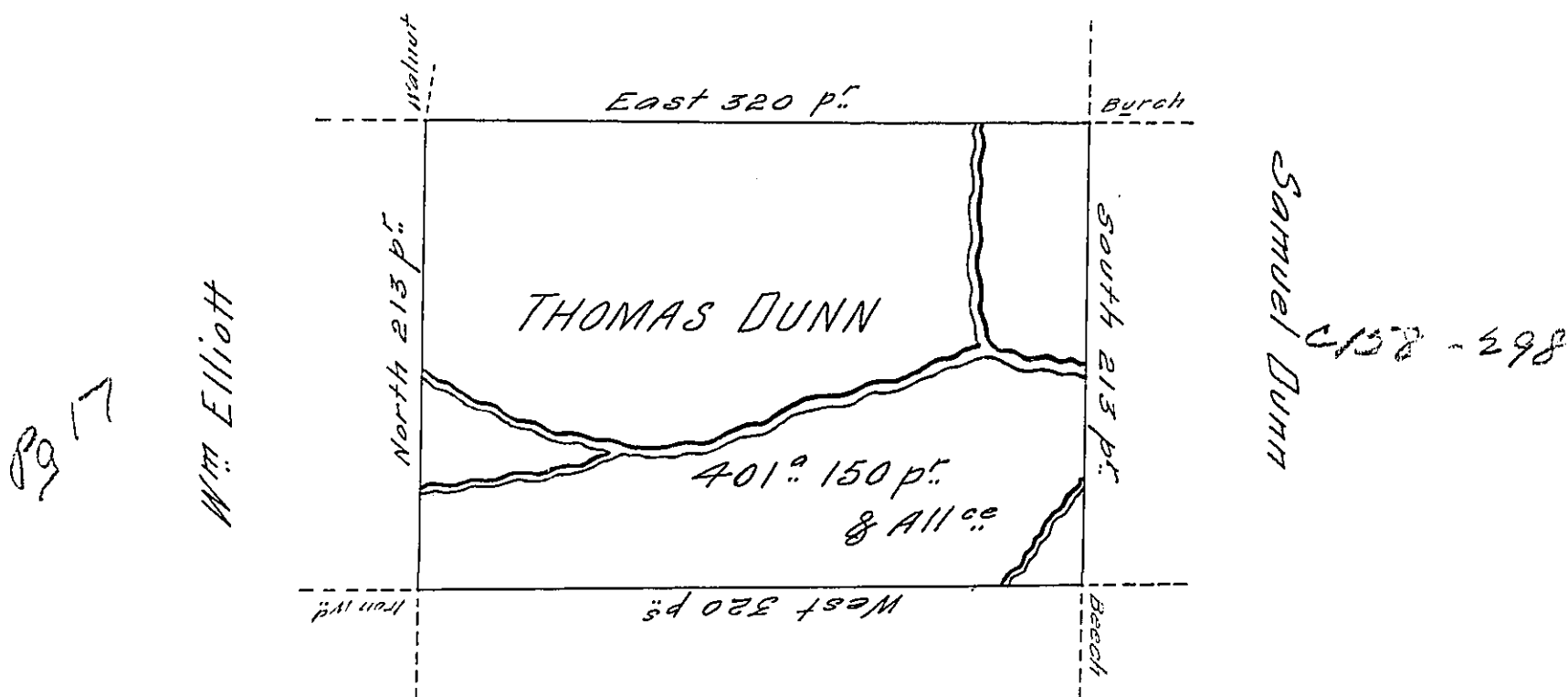


Samuel Power



Near the district line

Situate on the west side of French Creek in Allegheny County Containing 401 Acres and 150 p.f. and allowance of Six $\frac{1}{2}$ Cent for Roads &c. Surveyed the 5th day of October 1794. In pursuance of his Improvement bearing date the 4th day of November 1794

W^m Power D^x Sr.

To Daniel Brodhead Esq^r.
 Surveyor General }

IN TESTIMONY that the above is a copy of the original remaining on file in the Department of Internal Affairs of Pennsylvania, made conformably to an Act of Assembly approved the 16th day of February, 1833, I have hereunto set my Hand and caused the Seal of said Department to be affixed at Harrisburg, this ninth day of July 1906

Leach R. Brown
 Secretary of Internal Affairs.